

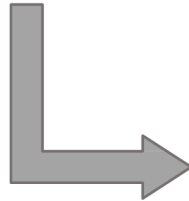
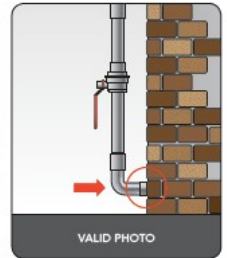
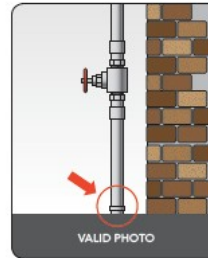
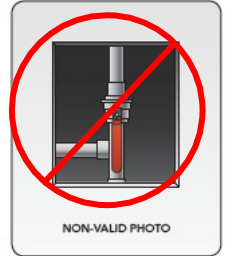
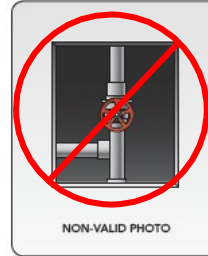
Instructions to Provide Water Pipe Material Information

Step 1

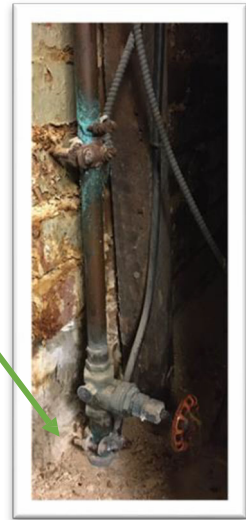
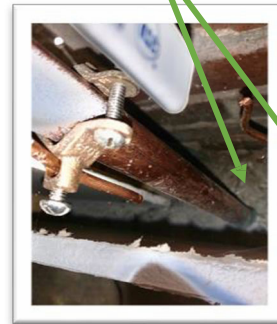
Locate the water service line entering the building. You need to see the pipe where it comes through the floor or wall. In the basement or lowest floor, or whole-house water shut-off valve nearby.



Cannot see where pipe comes through - try to pull back insulation and use phone camera to view pipe at breakthrough.



Pipe coming through floor



Step 2

Use Pipe Material Identification Sheet

- Look for threads at connections.
- Scratch pipe with a coin or key to reveal the metal. You may need to scratch through corrosion or paint. Lead is soft and scratches easily.
- See if a kitchen magnet sticks to the pipe. A magnet will not stick to a lead pipe.



Step 3

Take three (3) photos.

1. Pipe coming through wall or floor.
2. Closer view of pipe with scratch.
3. Further view of pipe that includes shut off valve.



Step 4

Send photos to waterdept@villageoffoxpoint.com
Include your address in the email for verification.